

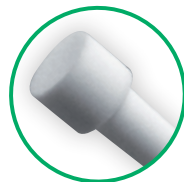
Microflash





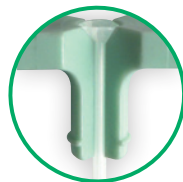
Microflash™ 2Fr

Rapid
flashback aids
accurate
venipuncture



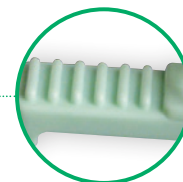
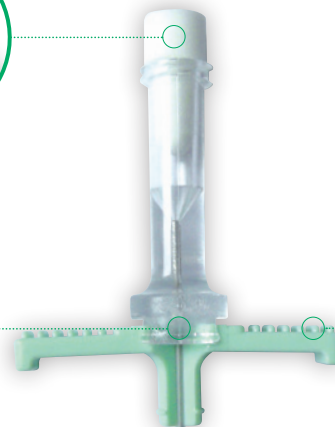
Gore filter

to minimize
blood loss



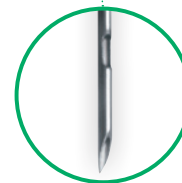
Funnelled opening

to facilitate catheter
insertion



Ribbed wings

to prevent slippage while
advancing or splitting the
cannula.



20G needle

small puncture
hole to reduce
trauma

Peelable introducer for
the insertion of **2Fr PICC**
with side hole needle &
clear cannula sheath for
early detection of blood
return.

Tri-bevel needle tip

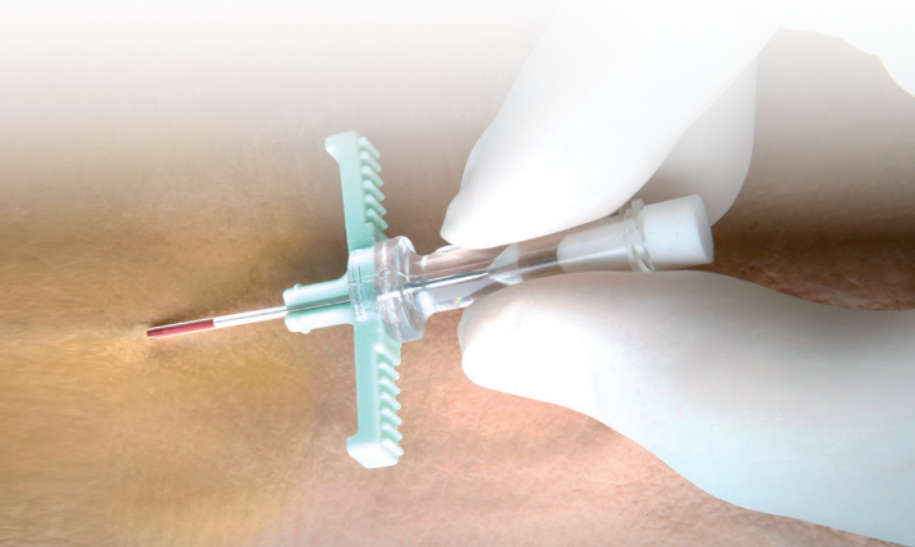
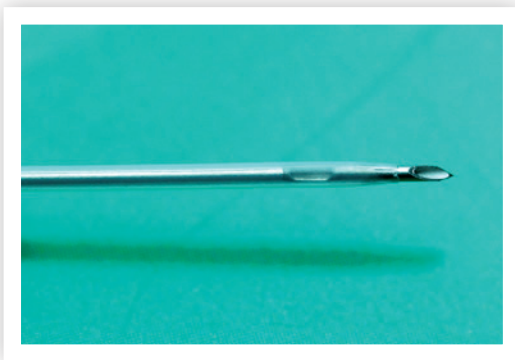
for ease of skin puncture and glide through the skin

Side hole close to the tip

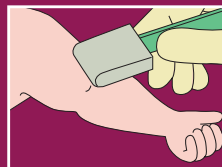
allows blood to quickly fill the space between needle shaft and cannula for fast detection of blood return

Transparent cannula

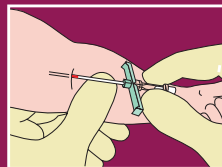
for immediate visualization of blood upon a vessel penetration



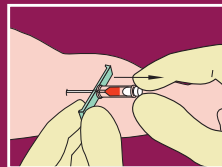
Use of Microflash



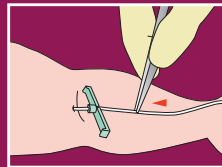
After selecting the vein to cannulate, **prepare, clean and drape site of venipuncture**. Apply a **tourniquet** above the intended insertion site in a manner easily accessible for removal. Remove gloves and don a **second pair of sterile gloves**.



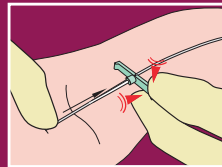
Remove protective cover from the Microflash. Using a slow but firm motion, **insert introducer needle and sheath into the vein**, bevel up at a 15 to 30 degree angle until the **confirmation of vein entry with blood flashback** at the lateral hole. **Lower the angle of the Microflash and advance the cannula into the vein**.



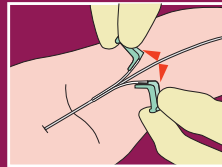
Remove tourniquet. Withdraw the needle while holding introducer sheath stationary. **Cover sheath opening** with thumb after needle removal to prevent blood flowback and air embolism.



Insert catheter through cannula using **non-toothed forceps** using **short, steady strokes** and advance the catheter to the desired position.



Secure the catheter by **applying light digital finger pressure on the catheter** beyond the cannula and slowly withdraw the cannula.



Carefully **peel the cannula apart** taking care not to dislodge the catheter from the vein.

To order

Code	Description	G	Ext. Ø	Packaging
7370.19	Microflash introducer 2 Fr	20 G	1.1 mm	25/box

Microflash is also available in the following catheter sets :

Catheter description					Code	Packaging
Name	Stylet	Size	Material	Length		
Premicath	No	1 Fr	PUR	20 cm	1261.22	10/box
	Yes				1261.208	
Epicutaneo 2	No	2 Fr	Silicone	15 cm	2484.152	25/box
				30 cm	2484.302	
				50 cm	2484.502	
Nutraline Twinflo	No	2 Fr	PUR	30 cm	1252.235	10/box
	Yes				1252.230	
Nutraline	No	2 Fr	PUR	15 cm	1252.150	10/box
			PUR soft	30 cm	1262.35	
	PUR		1252.35			
			Yes	1252.030		



Laboratoires pharmaceutiques Vygon
5, rue Adeline - 95440 ECOUEN - FRANCE
Reception : +33 (0)1.39.92.63.63

Service clients France : +33 (0)1.39.92.63.81

Export customer service : +33 (0)1.39.92.64.15

Fax : +33 (0)1.39.92.64.44 - www.vygon.com

For further information, please contact:
questions@vygon.com

The specifications shown in this leaflet are for information only and are not, under any circumstances, of a contractual nature.